



■ Features

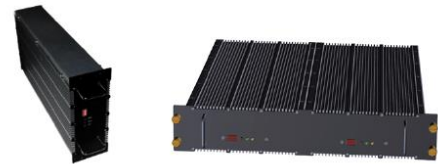
- Supply Voltage: 304-456Vac, 3-Phase

Ultra High Reliability

Fully-Enclosed Design

Ultra High Power Density

35% Less Power Loss



	15kW Module	30kW Module
Length (mm)	454	454
Width (mm)	218	436
Height (mm)	88	88

■ Application

- EV & Traction

Technical Sales / Customer Service: +1-818-338-7788 • Email: Sales@autec.com
 31328 Via Colinas Suite 102 • Westlake Village, California 91362 USA • www.autec.com

Specification	BCC15K-13007501	BCC30K-13007501
	15kW AC-DC Charging Rectifier Module	30kW AC-DC Charging Rectifier Module
Output Power	15kW	30kW
Input Voltage	304~456Vac	304~456Vac
Input Type	Three Phase, Three Lines	Three Phase, Three Lines
Input Frequency	45~65Hz	45~65Hz
Power Factor	≥0.99@50~100% Load	≥0.99@50~100% Load
THD	≤3%@100% Load, ≤5%@50% Load	≤3%@100% Load, ≤5%@50% Load
Input Current	<26A	<52A
Input Inrush Current	<45A	<90A
Output Voltage	300~750V	300~750V
Max. Output Current	20A	40A
Output Overshoot Voltage	750V	750V
Efficiency	96% typical @380Vac	96.5% typical @380Vac
Standby Power Loss	<0.1% Full Power	<0.1% Full Power
Output Regulation	±0.5% max	±0.5% max
Output Voltage Accuracy	±1% max	±1% max
Output Current Accuracy	±1% max	±1% max
Output Voltage Ripple	<1% (Peak), <0.5% (RMS)	<1% (Peak), <0.5% (RMS)
Current Sharing Accuracy	±5%@50~100% Load	±5%@50~100% Load
Operating Temperature	-30~+65°C (Derating above 50°C)	-30~+65°C (Derating above 50°C)
Operating Humidity	5%~95% (No Condensing)	5%~95% (No Condensing)
Storage Temperature	-40~85°C	-40~85°C
Dimensions	454x218x88mm	454x436x96mm
Cooling	Forced Air Cooling on Case	Forced Air Cooling on Case
IP Level	IP54	IP54
Weight	<18kg	<35kg
Altitude	≤4000m (When operating above 1000m, derating 1°C per 100m)	
MTBF	400,000 Hours	400,000 Hours
Noise	≤55dB@Full Load	≤55dB@Full Load
EMI	EN55022 Class A, EN55032 Class A	EN55022 Class A, EN55032 Class A
ESD	EN61000-3-11,12, EN61000-4-2,3,4,5,6,11	EN61000-3-11,12, EN61000-4-2,3,4,5,6,11
Surge Protection	YD 5098-2005 5kA	YD 5098-2005 5kA
* The data above are based on 380Vac input, full load output, 25°C ambient temperature, unless otherwise noted.		