





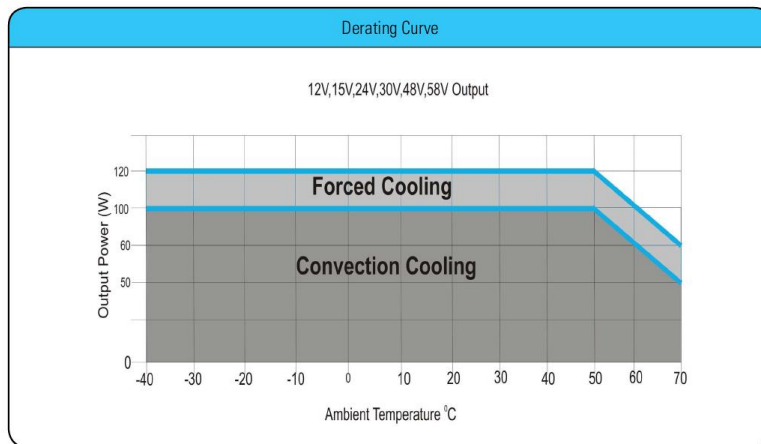
Sales / Technical Support: +1-818-338-7788 Option 3  
 Email: [sales@autecpower.com](mailto:sales@autecpower.com)

Available outputs:

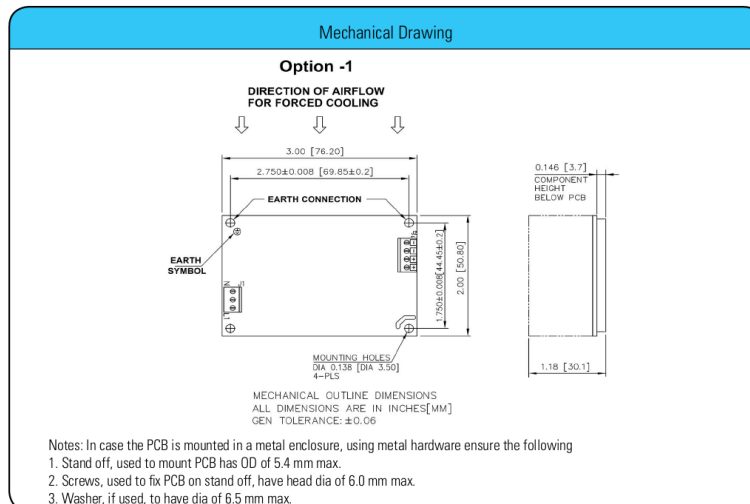
<u>Model</u>	<u>Output Voltage</u>	<u>Max. Load</u>	<u>Min. Load</u>	<u>Ripple</u>
SPJ120-120-XY	12V	8.33A / 10A AIR	0.0A	1%
SPJ120-150-XY	15V	6.67A / 8A AIR	0.0A	1%
SPJ120-240-XY	24V	4.16A / 5A AIR	0.0A	1%
SPJ120-300-XY	30V	3.33A / 4A AIR	0.0A	1%
SPJ120-480-XY	48V	2.08A / 2.5A AIR	0.0A	1%
SPJ120-580-XY	58V	1.72A / 2.07A	0.0A	1%

<b>Mechanical Specifications</b>	
AC Input Connector (J1) Option 1	Molex: 39357-0003 Tyco: 2-1776112-3
DC Output Connector (J2) Option 1	Molex: 39357-0004 Tyco: 2-1776112-4
Dimensions	3 x 2 x 1.18 inches (76.2 x 50.8 x 30.1 mm)
Weight	200gm Max.
<b>EMC</b>	
CE Mark	Complies with LVD Directive
Conducted Emissions	EN55022-B, CISPR22-B, FCC PART15-B
Static Discharge	EN61000-4-2, Level-3
RF Field Susceptibility	EN61000-4-3, Level-3
Fast Transients/Bursts	EN61000-4-4, Level-3
Radiated Emissions	Level A radiated, Level B radiated with external core (King core K5B RC 25x12x15-M in input cable with 5 Turns)
Surge Susceptibility	EN61000-4-5, Level-3
Harmonic Current	EN61000-3-2, Class D
<b>Safety</b>	
Safety Standard(s)	IEC/EN 60950-1:2006/A11:2009/A1:2010/A12:2011/A2:2013, UL 60950-1, 2nd Edition, CAN/CSA C22.2 No. 60950-1-07, 2nd Edition, GB4943. 1-2011 ; GB9254-2008 ; GB17625. 1-2012
Approval Agency	Nemko, UL, C-UL , CCC

Connectors		
J1	Pin 1	AC LINE
	Pin 2	NOT FITTED
	Pin 3	AC NEUTRAL
J2	Pin 1,2	V1 -VE
	Pin 3,4	V1 +VE



Mechanical drawing single-output with Terminal Screws



Mechanical drawing single-output with Molex Terminal

