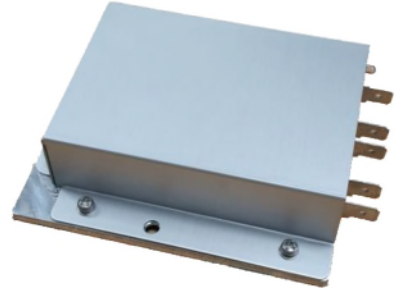


Product Overview

Autec Power 48W and 320W wind power DC/DC modules are designed with extraordinary circuit designs, providing performances of high power density, high reliability, and high efficiency. The module is designed with perfect thermal management, anti-shock technique, and super long life time. It has been successfully installed in wind turbines and other applications with high reliability requirement.



- Ultra-Wide Input Voltage Operation
- Ultra-High Reliability
- High Efficiency, up to 94%
- All-Around Protections: OVP, SCP, OTP
- Free Air Cooling
- On/Off Control

Specifications

* Ta=25°C, rated input voltage & full load unless otherwise specified.

Models	MVLDC320-240	MVLDC048-240
Power	300W	48W
Input Voltage	28~160Vdc	22~160Vdc
Output Voltage	24V	24V
Output Current	12.5A	2A
On/Off	Yes	Yes
Isolation	No	Yes
Efficiency	94%	86.5%
Operating Temp. (Case)	-40~85°C	-40~85°C
Dimensions	100x90x27mm	100x90x27mm
Cooling	Air Cooling	Air Cooling